

Denise Dunn

From: Gardener, Ken [kgardene@cha.ab.ca]

Sent: Tuesday, February 22, 2005 8:03 PM

To: Dr. Robert Williams

Subject: medical organization charts

Bob,

I've managed to include an organizational chart for you that depicts my high level positions of medical directors and regional program clinical directors. It doesn't include the site leaders or the regional section heads.

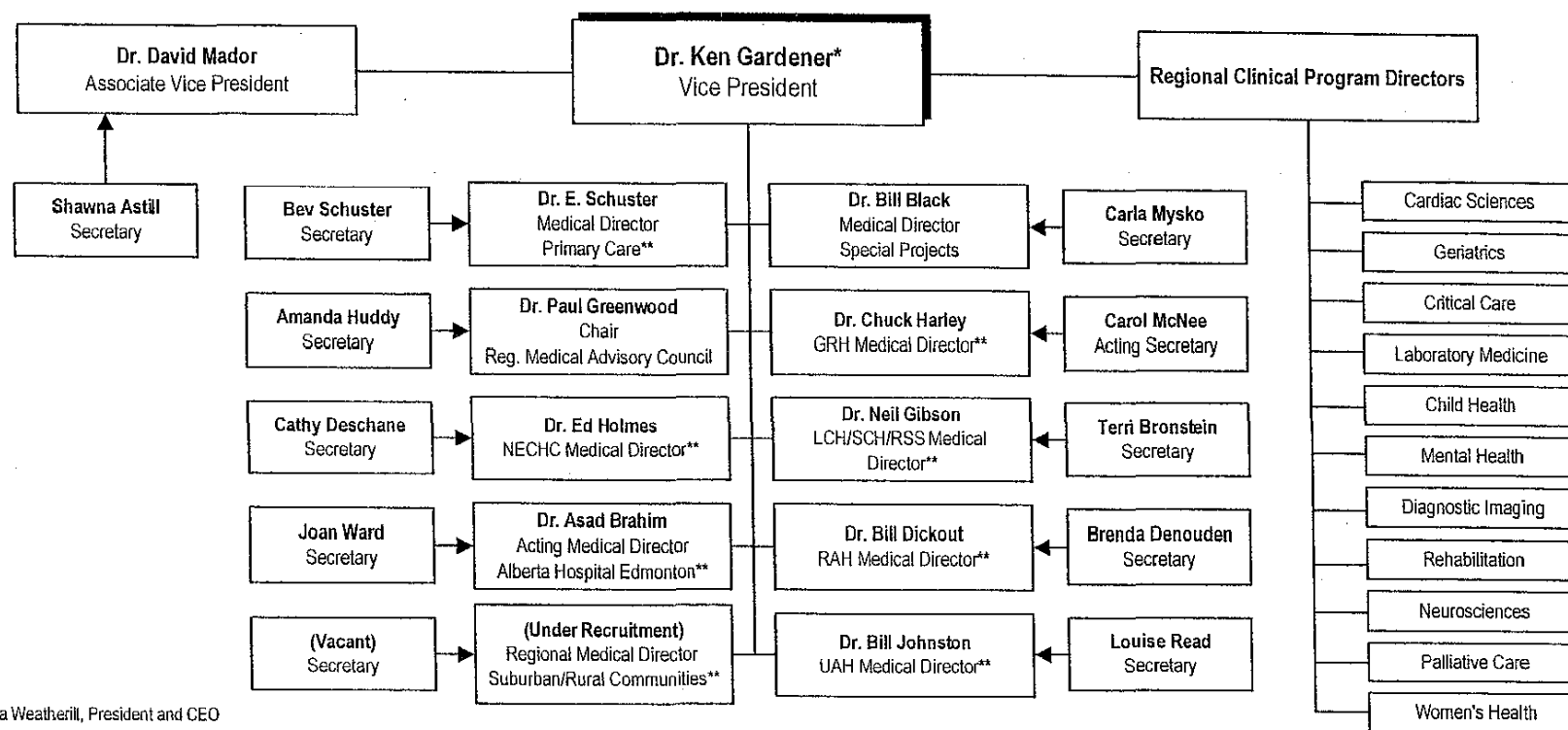
I'm trying to get the quality information into a better format to send so that will come along soon.

Ken

<<MS%20-%20Medical%20Directors%2011Sep04[1].pdf>>

2/23/2005

MEDICAL AFFAIRS MEDICAL DIRECTORS September 2004



*Reports to Sheila Weatherill, President and CEO

** Dual reporting to COO/SOO/Site Administrator



Capital
Health

Chart #13(a)
Medical Directors
Revised: September 10, 2004